

ONETORK SR Series Actuators

ONETORK SR Series electric actuators provide a failsafe solution for any quarter-turn application. Our worm gear design offers a constant reliable torque output and efficient performance. While the motor disconnect keeps it from backdriving during spring fails, thus extending the life of the actuator. All actuator sizes have adjustable travel stops in both directions +/- 5°. The SR Series is a high quality, reliable and economic actuator, utilizing tried and tested methods of operation and the latest innovations in technology.

FEATURES

- Cast Aluminum Alloy Housing rated NEMA 4, 4X / IP67 w/ O-ring sealing. Available in explosion proof enclosure
- Color coded internal wiring
- De-Clutchable Manual Override to operate during loss of power
- ISO 5211 standardized mounting pad, removable blank drive hub can be machined to match any application
- Rolled steel wormgear drive provides long life, low noise level and prevents valve backlash.
- Continuous visual flat indicator showing valve position
- Mechanical cam actuated end of travel limit switches can be easily adjusted for precise valve position
- Optional "Governor" system allows slower spring fail times
- 20 Watt internal Anti-condensation heater minimizes water damage due to temperature and humidity changes
- Squirrel caged induction motor, totally enclosed with high stall torque. Low inertia force is suited for seating and unseating valves

OPTIONS

- EXP Explosion Proof Enclosure
ATEX EExd IIB T4
- ALS Aux. Limit Switches / 2 SPDT
- LCS Local Control Station
LED Indicators / 2 Selectors
- DHC Digital 4-20 mA Controller
- PCU Analog 4-20 mA Controller
- OTX 4-20 mA Feedback (Digital)
- CPT 4-20 mA Feedback (Analog)
- OSW Ohm Slide Wire Feedback
- IMS Integral Motor Starters
Solid State Relays
120V Control Transformer
- RCT Repeat Cycle Timer and/or
Cycle Length Controller
- DCM 24 VDC Motor

ONETORK

STANDARD SPECIFICATIONS

Enclosure	NEMA 4, 4X / IP67 Watertight
Ambient Temp.	Standard: -20°F ~ +158°F (Rated 300°F / 1 Hour) Low Temp: -40°F ~ +158°F (Option)
Power Supply	120/220 VAC 1-Phase 50-60 Hz +/- 10% 380/440 VAC 3-Phase 50-60 Hz
Control Power	Low Voltage AC or DC / High Voltage AC (120V Max)
Limit Switches	(2) SPDT Mechanical Switches / Rated: 250V-15A
Travel Angle	90° +/-5°
Stall Protection	Internal Motor Thermal Protection Open @ 300°F / Close @ 207°F
Indicator	Continuous Flat Position Indicator
Manual Override	De-Clutchable Hand/Auto
Mechanical Stops	External Adjustable Stop Bolts
Space Heater	20 Watt Anti-Condensation 24/120/220 VAC and 24 VDC
Conduit Entries	(2) 3/4" NPT
Lubrication	Shell Gadus S2 V220 2
Materials	Aluminum Alloy, Steel, Aluminum Bronze
Surface Treatment	Anodizing
External Coating	Polyester (TGIC - Free)

SPECIFICATIONS

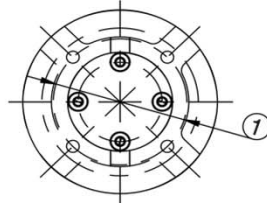
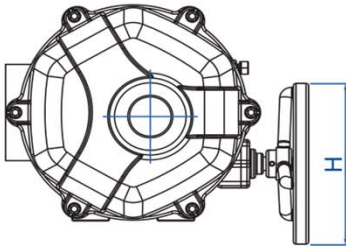
MODEL	Max Torque IN/LBS	Operating Time Seconds		Rated Current Amps / Locked Rotor Amps					Weight Lbs - WT
				DC	1-Phase		3-Phase		
		50 Hz	60 Hz	24V	120 Vac	220 Vac	380 Vac	440 Vac	
SR-05	442	16	14	7/15	1.7/3.55	1/1.9	.25/.77	.24/.9	60
SR-10	885	18	16	7/15	3/4.1	1.3/2.5	.4/1.22	.4/1	80
SR-20	1770	60	51	9/17	3.9/5	1.8/2.55	.45/1.35	.4/1.4	114
SR-30	2655	80	60	9/17	3.9/5	1.8/2.55	.45/1.35	.4/1.4	139

MODEL	ISO5211	SPRING RETURN SPEED - 90°	MOTOR (W)		Duty Cycle 30 Min. TP	OVERRIDE NUMBER OF TURNS - 90°	WEIGHT LBS - EP
			AC	DC			
SR-05	F07	1 SEC.	60	40	100%	25	70
SR-10	F07/F10	1 SEC.	90	40	100%	25	90
SR-20	F10/F12	1-2 SEC.	90	40	80%	75	126
SR-30	F10/F12	2-3 SEC.	90	40	80%	110	151

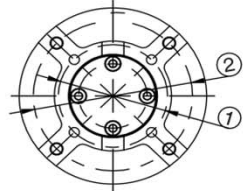
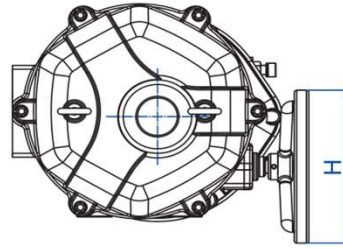
DIMENSIONS - Inches

SR-05

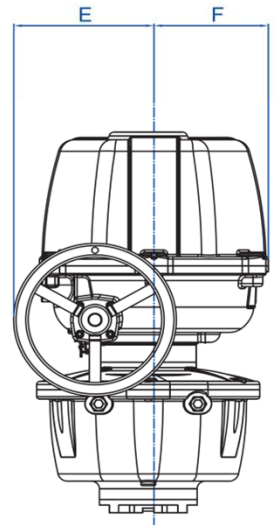
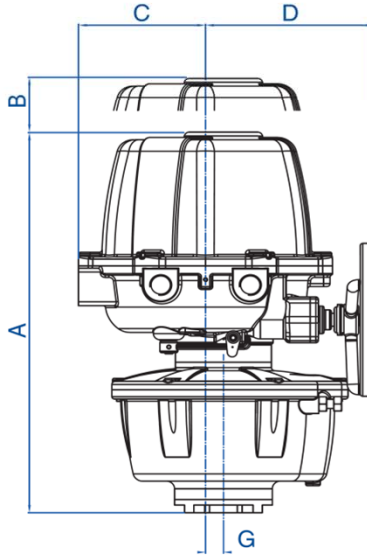
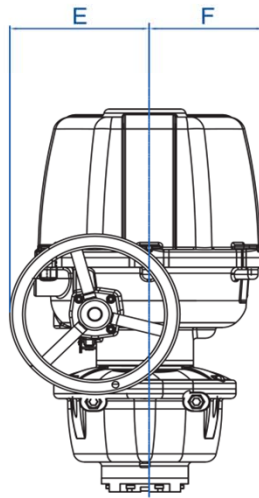
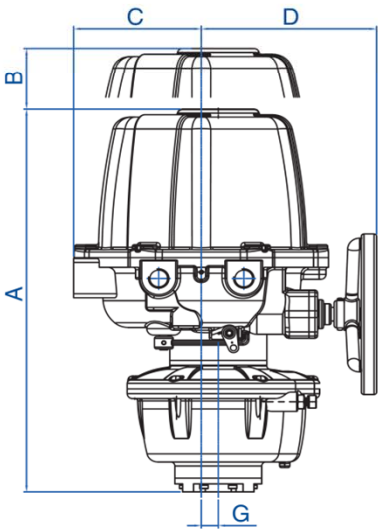
SR-10



No. 1: 2.76" / 4-M8



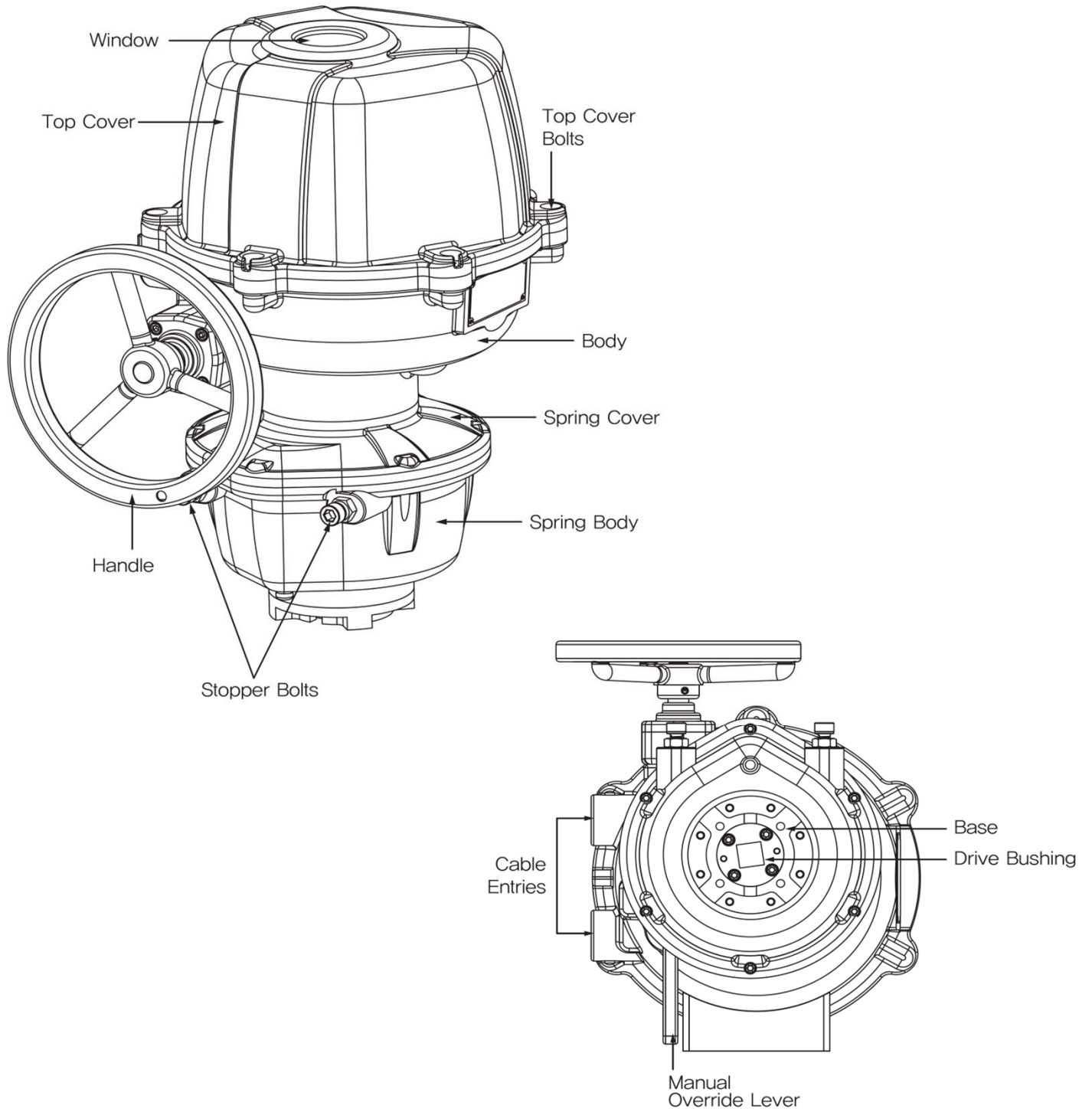
No. 1: 2.76" / 4-M8
No. 2: 4.02" / 4-M10



Model	A	B	C	D	E	F	G	H
SR-05	18.78	6.11	5.91	8.11	6.46	5.28	0.79	7.87
SR-10	19.61	8.39	6.14	8.19	6.77	5.55	0.87	7.87

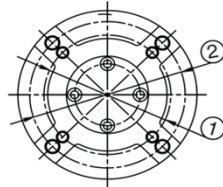
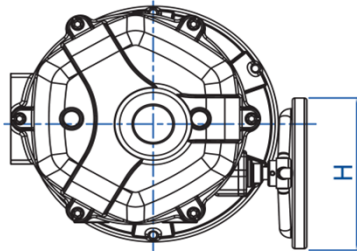
EXTERIOR PARTS

SR-05, SR-10



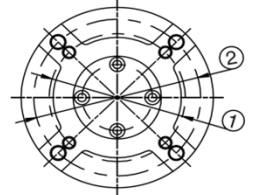
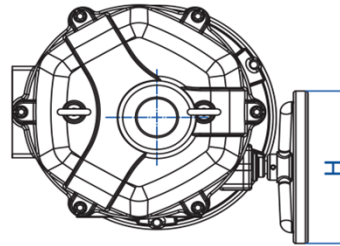
DIMENSIONS - Inches

SR-20

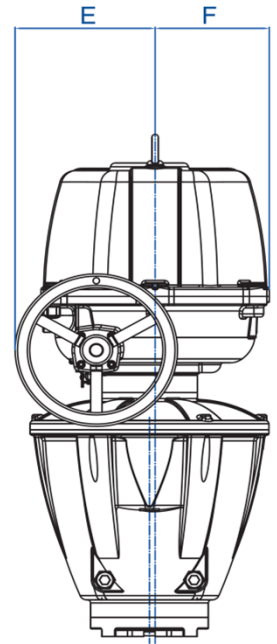
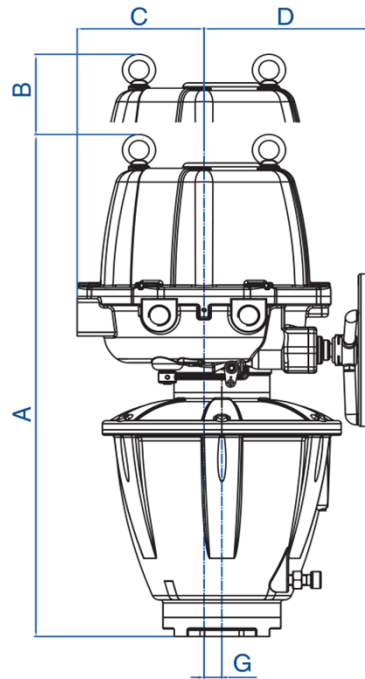
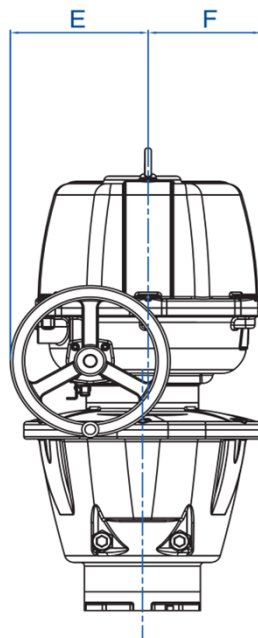
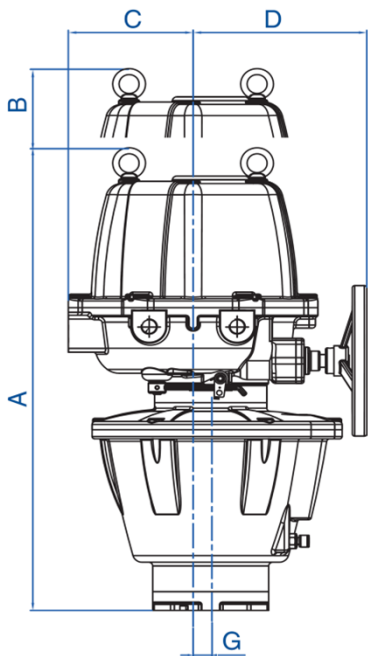


No. 1: 4.02" / 4-M10
No. 2: 4.92" / 4-M12

SR-30



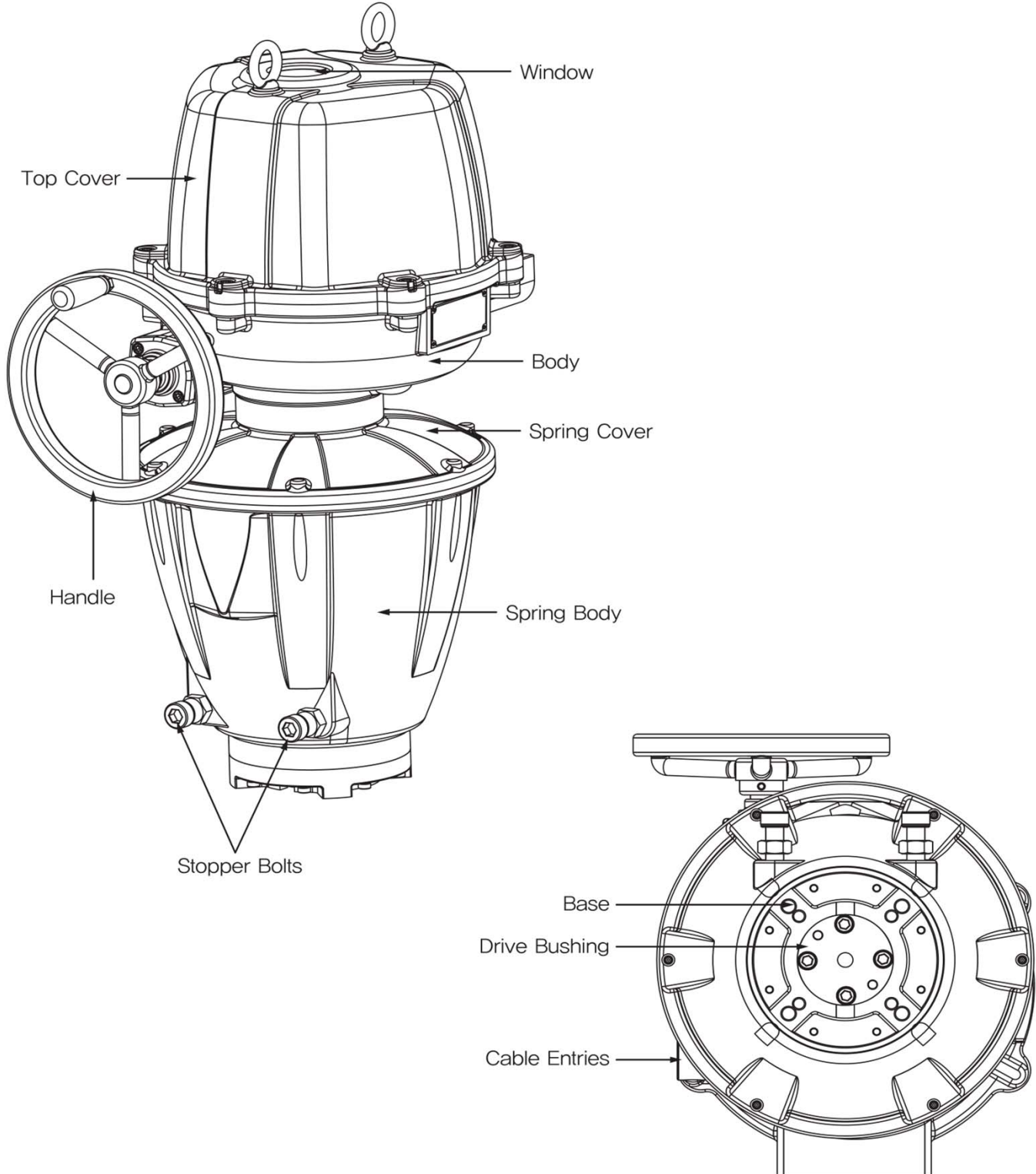
No. 1: 4.02" / 4-M10
No. 2: 4.92" / 4-M12



Model	A	B	C	D	E	F	G	H
SR-20	24.21	8.39	6.18	8.54	6.81	5.59	0.87	7.87
SR-30	25.94	8.39	6.18	8.54	6.81	5.59	0.87	7.87

EXTERIOR PARTS

SR-20, SR-30



APPLICATION DATA**CUSTOMER**

Company

Street

City

Zip

Contact

VALVE INFORMATION

Mfg

Type

Valve Rotation

CW

CCW

Fail Rotation

CW

CCW

Maximum Required Torque (w/ safety factor)

IN/LBS

ACTUATOR REQUIREMENTS

Open / . Close

Modulating

Supply Voltage

Control Voltage

OPTIONAL ITEMS (If Needed)

Modulating Control Board

Feedback Transmitter

Local Control Station

Cycle Length Control

Other

DETAIL

Job Location

Contractor

Item / Tag

NOTES: